

 Smart choices. Powerful tools.

Blueprint Integrated Pilot Programs

February 2, 2009

National Health Policy Conference
Washington DC



 Smart choices. Powerful tools.

Blueprint Team
 Vermont Department of Health
 108 Cherry Street – Suite 301
 PO Box 70
 Burlington, VT 05402

Craig Jones, MD
 Blueprint Executive Director
 (802) 879-5988 phone
 (802) 859-3007 fax
craig.jones@vdh.state.vt.us

Lisa Dulsky Watkins, MD
 Blueprint Assistant Director
 (802) 652-2095 phone
 (802) 859-3007 fax
lwatkin@vdh.state.vt.us

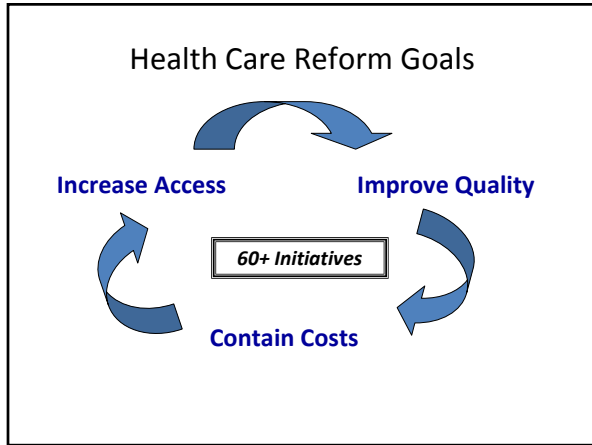
Jenny Samuelson, MS
 Blueprint Community/Self Management Director
 (802) 863-7204 phone
 (802) 859-3007 fax
jsamuel@vdh.state.vt.us


James Morgan, MSW
 Blueprint Project Administrator
 (802) 865-7785 phone
 (802) 859-3007 fax
jmorgan@vdh.state.vt.us

Beth Thorpe
 Blueprint Business Manager
 (802) 652-2094 phone
 (802) 859-3007 fax
bthorpe@vdh.state.vt.us

Terri Price
 Blueprint Administrative Support
 Healthier Living Workshop Statewide Coordinator
 (802) 652-2096 phone
 (802) 859-3007 fax
tpnce@vdh.state.vt.us

Diane Hawkins
 Executive Staff Assistant to Craig Jones
 Office of Health Care Reform
 312 Hurricane Lane
 Williston, VT 05495
 (802) 879-5988
diane.hawkins@vdh.state.vt.us


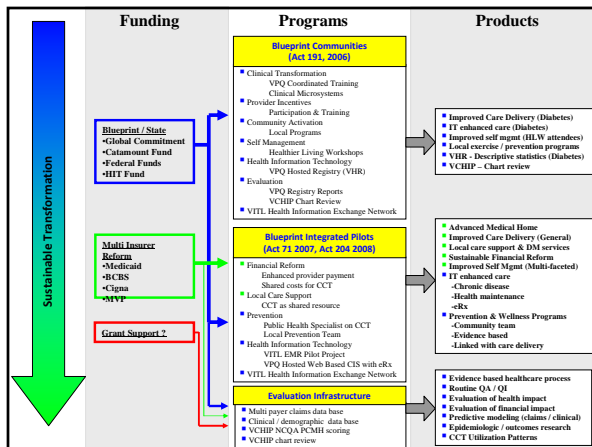





 Smart choices. Powerful tools.

Vermont Blueprint Context

- Relatively good distribution of Primary Care Providers (PCPs) statewide
 - 800 PCPs in 300 practices in 13 Hospital Service Areas
- Three major health plan carriers + Medicaid + Medicare
- Most PCPs participate in all plans
- History of working together

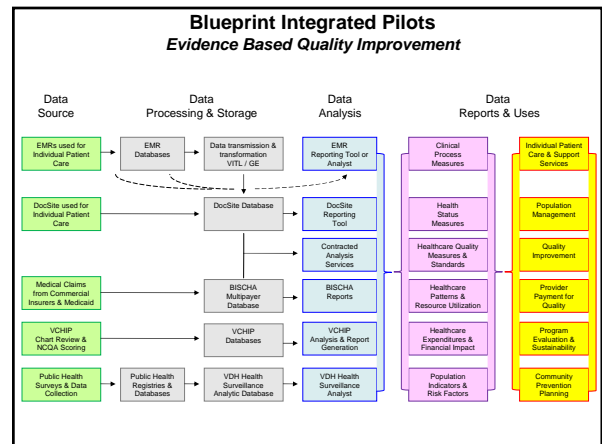
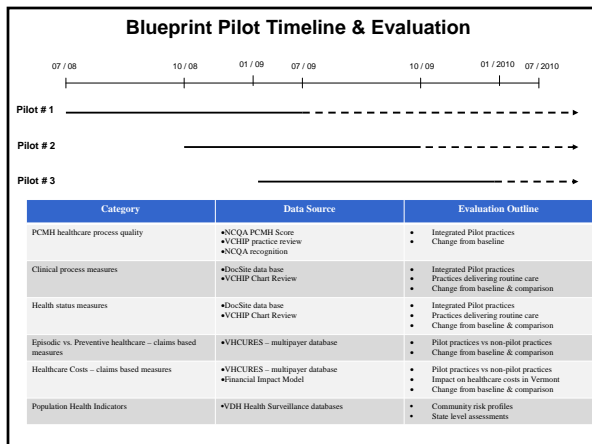
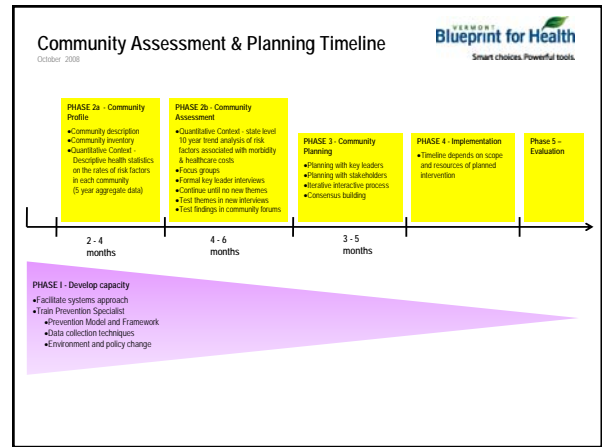
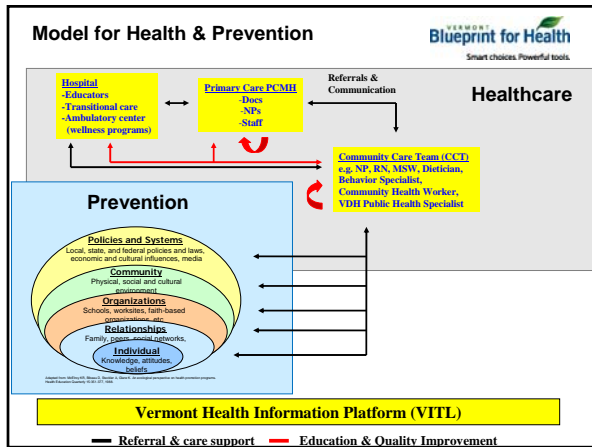
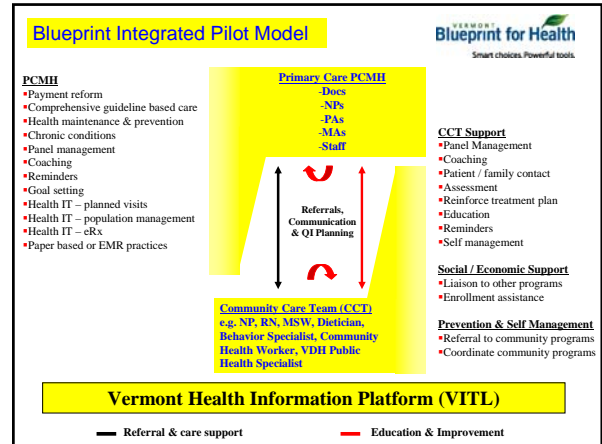
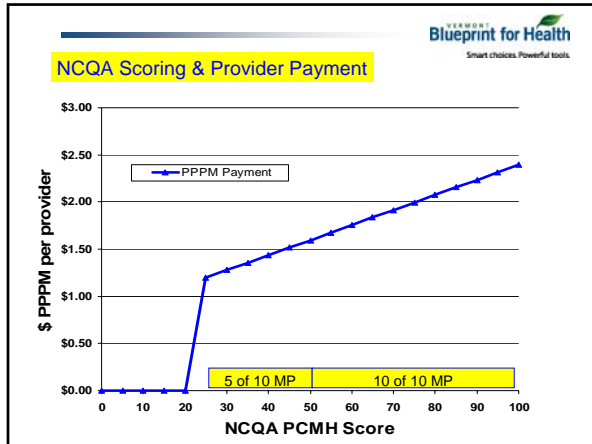



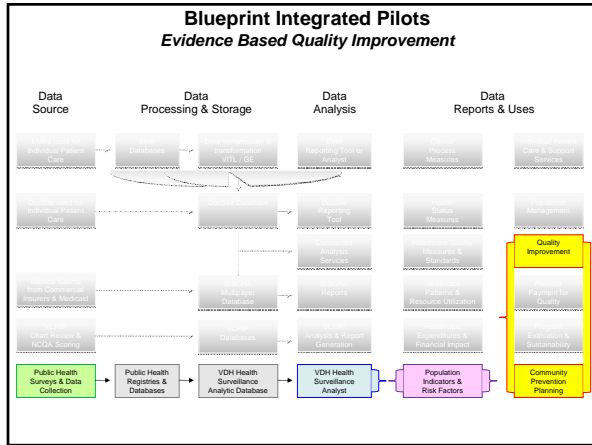
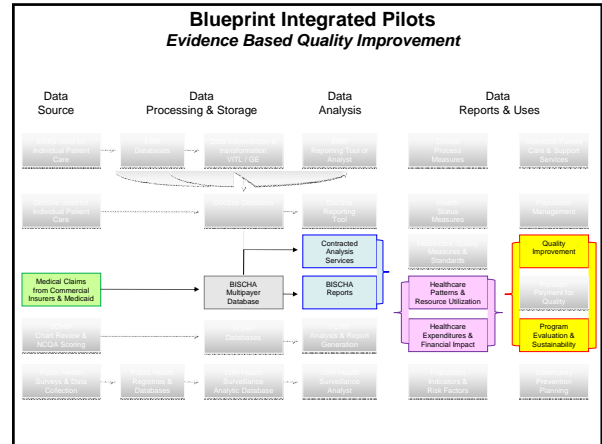
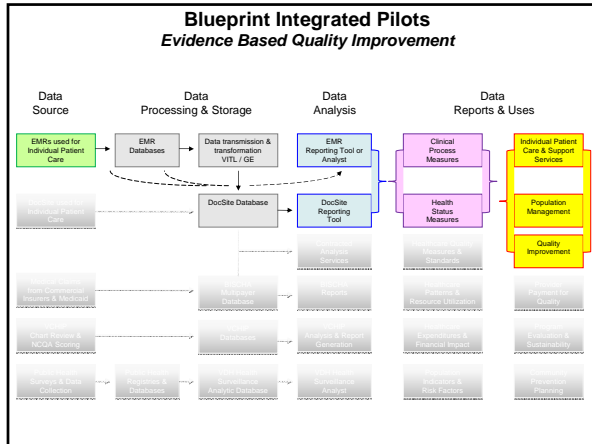


 Smart choices. Powerful tools.

Blueprint Integrated Pilot Summary

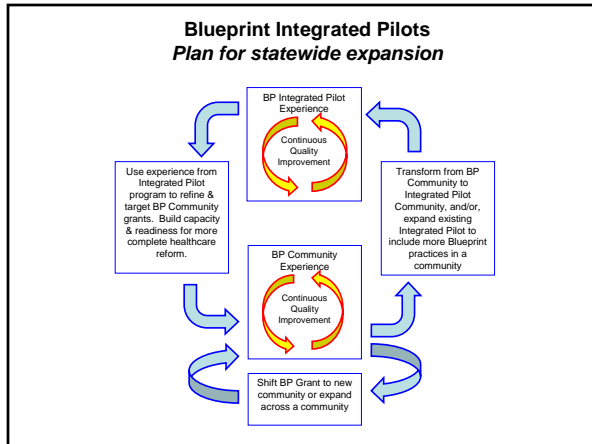
1. Financial reform
 - Payment based on NQA/PCMH standards
 - Shared costs for Community Care Teams
 - Medicaid & commercial payers
 - BP subsidizing Medicare
2. Multidisciplinary care support teams (CCT Teams)
 - Local care support & population management
 - Prevention specialists
3. Health Information Technology
 - Web based clinical tracking system (DocSite)
 - Visit planners & population reports
 - Electronic prescribing
 - Updated EMRs to match program goals and clinical measures in DocSite
 - Health information exchange network
4. Community Activation & Prevention
 - Prevention specialist as part of CCT
 - Community profiles & risk assessments
 - Evidence based interventions
5. Evaluation
 - NQA/PCMH score (process quality)
 - Clinical process measures
 - Health status measures
 - Multi payer claims data base





VERMONT Blueprint for Health Smart choices. Powerful tools.

Community	Practice	# Provider	# Patients
St. Johnsbury	Caledonia Internal Medicine	3	2,011
	Concord Health Center	2	2,183
	Corner Medical	6	14,500
	Danville Health Center	2	3,088
	St. Johnsbury Family Health Center	2	2,822
	Total St Johnsbury		15
Burlington	Fletcher Allen Affiliated Aesculapius Medical Center	9	15,774
	Private Practice – Non Affiliated	1	1,800
	Total Burlington	10	17,574
Bennington	Planning stages		
Total (first 2 sites only)		25	42,178



- ### Blueprint Integrated Pilots Building a Scalable Model
- Build a model for effective and sustainable reform
- Financial Incentives (balance volume & quality)
 - Environment (PCMH, CCTs, PH specialists, Health IT)
 - Focus (quality, wellness, prevention)
 - Evaluation (multidimensional, routine)
 - Culture (self management, engaging yet objective)